

A photograph of an industrial facility, likely a refinery or chemical plant, at night. The facility is illuminated by numerous lights, and its complex structure of towers, pipes, and storage tanks is reflected in the calm water in the foreground. The sky is dark with some clouds, and the overall scene conveys a sense of industrial activity and technological sophistication.

DASHBOARD

— REMOTE MONITORING —

7th July 2016

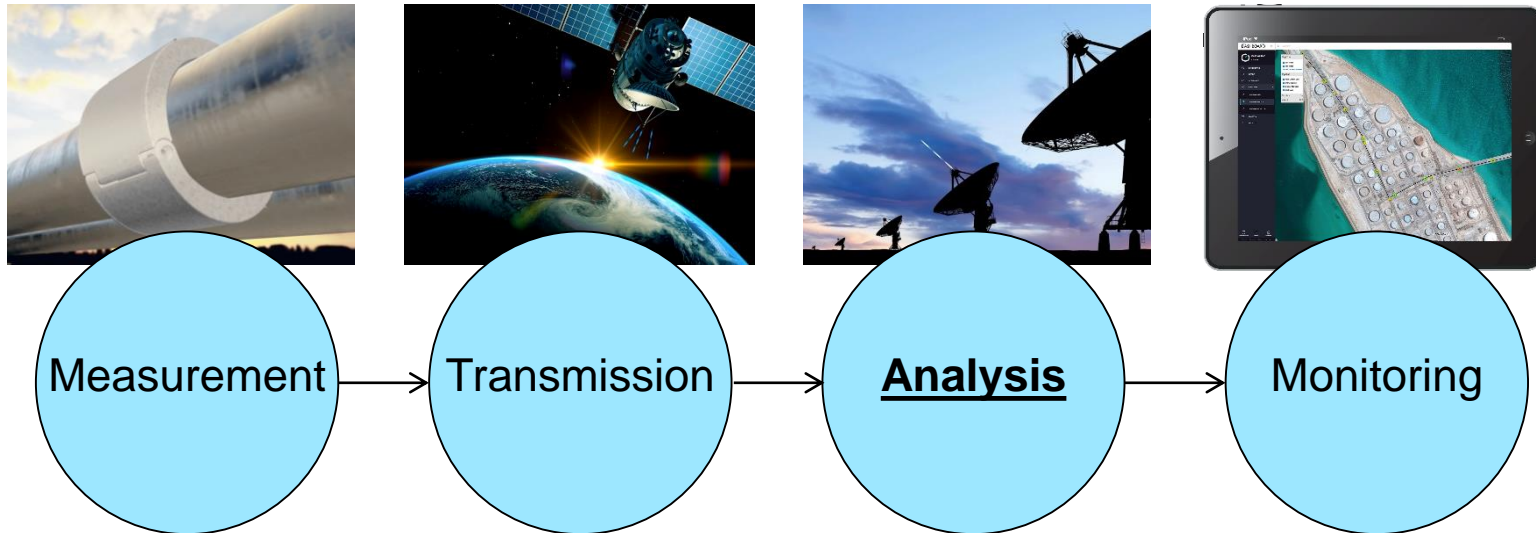
Presented by

Simon Jones CSO

1 Frederick's Place | London | UK

Dashboard Monitoring Solutions

- for all industrial processes



“This isn’t a price war but a cost war and the weapon of choice is innovation.”

Mark Salkeld
CEO, PETROLEUM SERVICES ASSOCIATION OF CANADA



Initial application – Oil & Gas

WHY?

- Leak Detection (current solutions ineffective)**
- Back Allocation (accurate reporting)**
- Environmental Mitigation (for existing and new pipelines)**

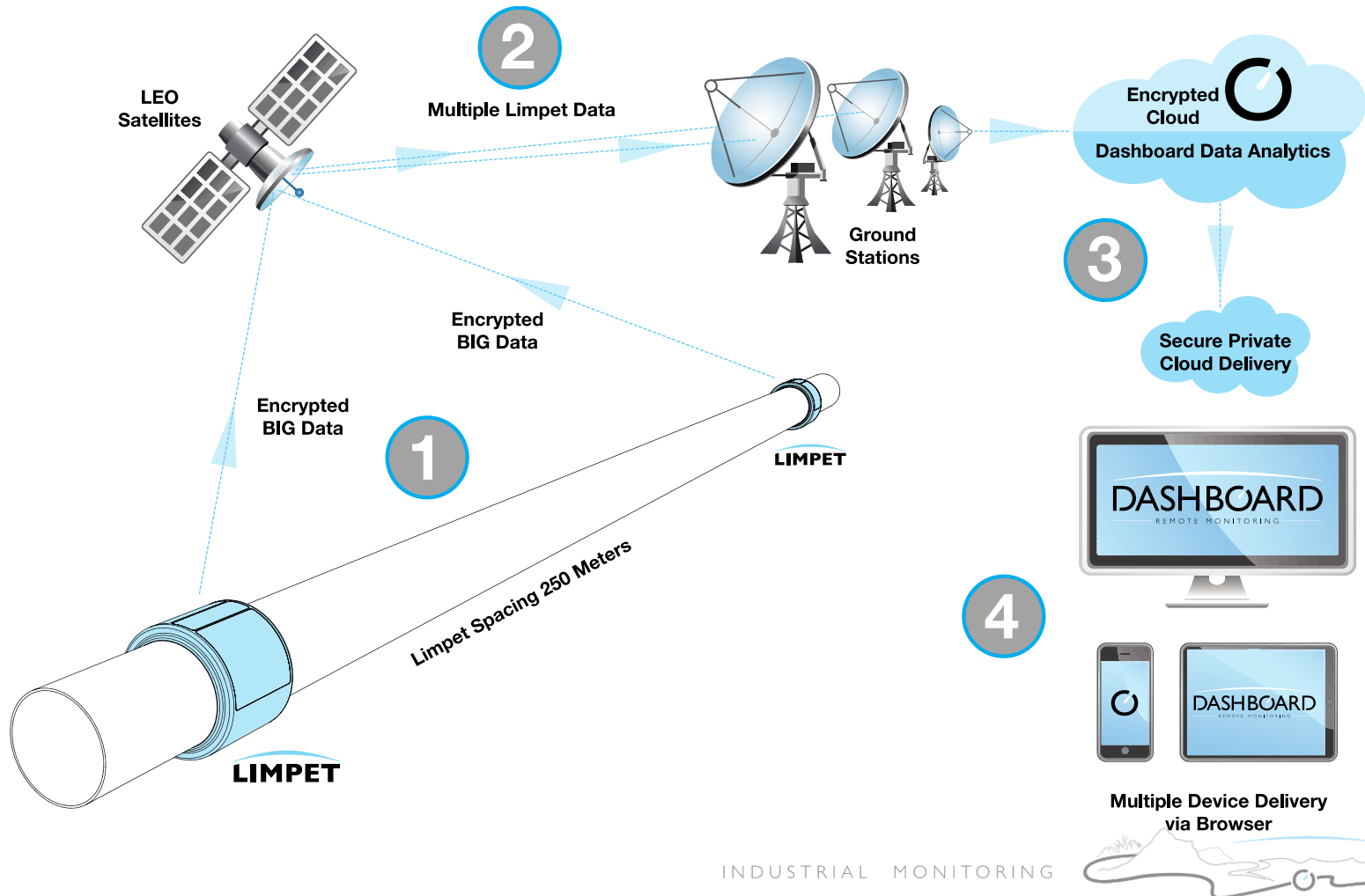
HOW?

- Delivered as a service via channel partners**
- Solution is optimised for retro-fitting to existing pipelines**

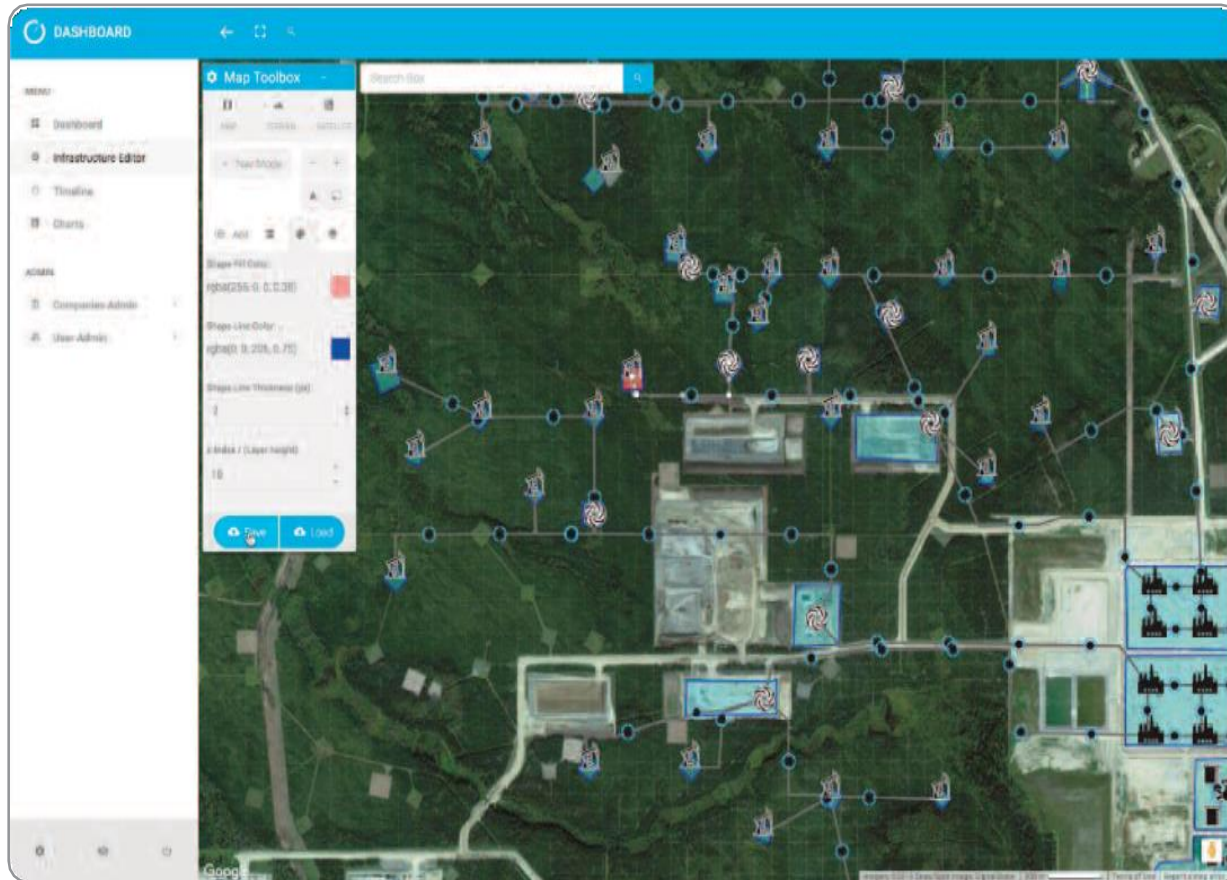
The **LIMPET** Solution (Oil and Gas)

REMOTE MONITORING

- for retrofit and new pipeline deployment



Dashboard Interface



BiG RiG - test facility



Laser cut
stainless steel
Limpet strap with
fixing points for
monitoring
enclosures



IP 68 enclosure
boxes affixed
to strap,
interconnected
for 360°
measurement
monitoring

150, 300 & 600mm Oil pipe test rig, fed by 5000 litre tank with industrial pump

Customer Engagement Summary - June 2016



- Saltend - wireless comms and remote temperature monitoring
- Sullom Voe - field trial testing of the LIMPET collar
- Azerbaijan - wireless comms and remote temperature monitoring



- Field trial testing planned for Q3 2016



- \$25,000 Condition Survey proposed – June 2016
- \$350,000 Commercial trial proposed – June 2016

Saudi Aramco



- Proof of concept opportunity in Saudi Arabia
- Channel partner opportunities
 - Wood Group
 - Schlumberger
 - Fluor
 - Worley Parsons
 - Technip

Parallel Data Analytics Applications

- Tidal (REMO project - Bristol)
- Wind (CMS wind project)
- Waste Management
- Industrial Process Monitoring
- DEFRA
- Water

Intellectual Property

Areas for proprietary IP creation (Limpet only)

Embedded hardware device design

Component manufacture (e.g. proprietary transducers)

Data analysis algorithms/techniques

Dashboard design/visualisation/geospatial integration

Timelines

Q4 2015 - UK trademark application

Q4 2015 - 3x Patent applications filed

Q1 2016 - 2x European registered designs granted

Q2 2016 - 2x Further patent applications drafted

Q2 2017 - Worldwide patent application (latest)



Piers Corfield - CEO

Communications professional/hosted solution/mobile Architect



Kevin Heng – International Operations Director

International logistics, organisation and resourcing & technical consultancy



Simon Jones - CSO

Corporate sales/account management & customer relations



Richard Watts - CDO

Design/dashboard interface/corporate communications/brand management



Pete Stirling - Chief Product Officer

Technical architecture design and business development



Nigel Widdowson – Chief Financial Officer

Experienced finance professional with many years Middle East experience





Simon Jones

simon@remotedashboard.io

07850 541001