

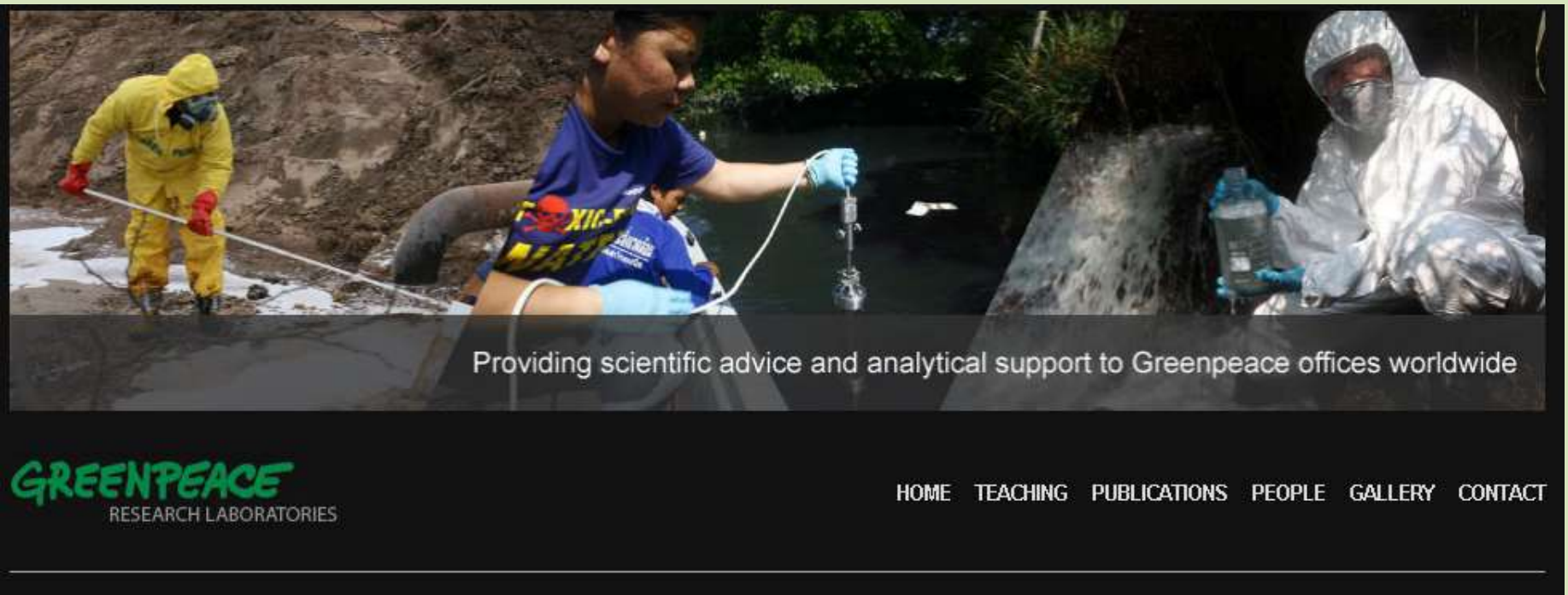
The Greenpeace Research Laboratories

Providing scientific advice to a global NGO

David Santillo

School of Biosciences, Innovation Centre
University of Exeter

www.greenpeace.to/greenpeace



- Established 1987 at Queen Mary College, University of London
- Since 1992, based at the University of Exeter
- Research staff affiliated to College of Life and Environmental Sciences through Honorary Fellowships
- Independence to conduct and defend research

Greenpeace values

- 'Bearing witness' to environmental destruction;
- Exposing bad practice - highlighting good practice;
- Use of non-violent confrontation to challenge destructive practices;
- Seeking solutions and promoting open, informed debate about society's environmental choices;
- Having no permanent allies or adversaries;
- Ensuring independence from political and commercial interests.

Greenpeace: an organisation guided by science



- Investigative research (including analytical research)
- Information and advice
- Critical review of output
- 'Radar' for emerging issues
- Media work (planned and reactive)
- Technical support for work with companies and governments and in international policy fora
- Guiding Greenpeace policy development



Science Unit: analytical capabilities



- GC-MS
- ICP-AES
- Field equipment
- Radiation safety advice
- Working relationships with many leading laboratories

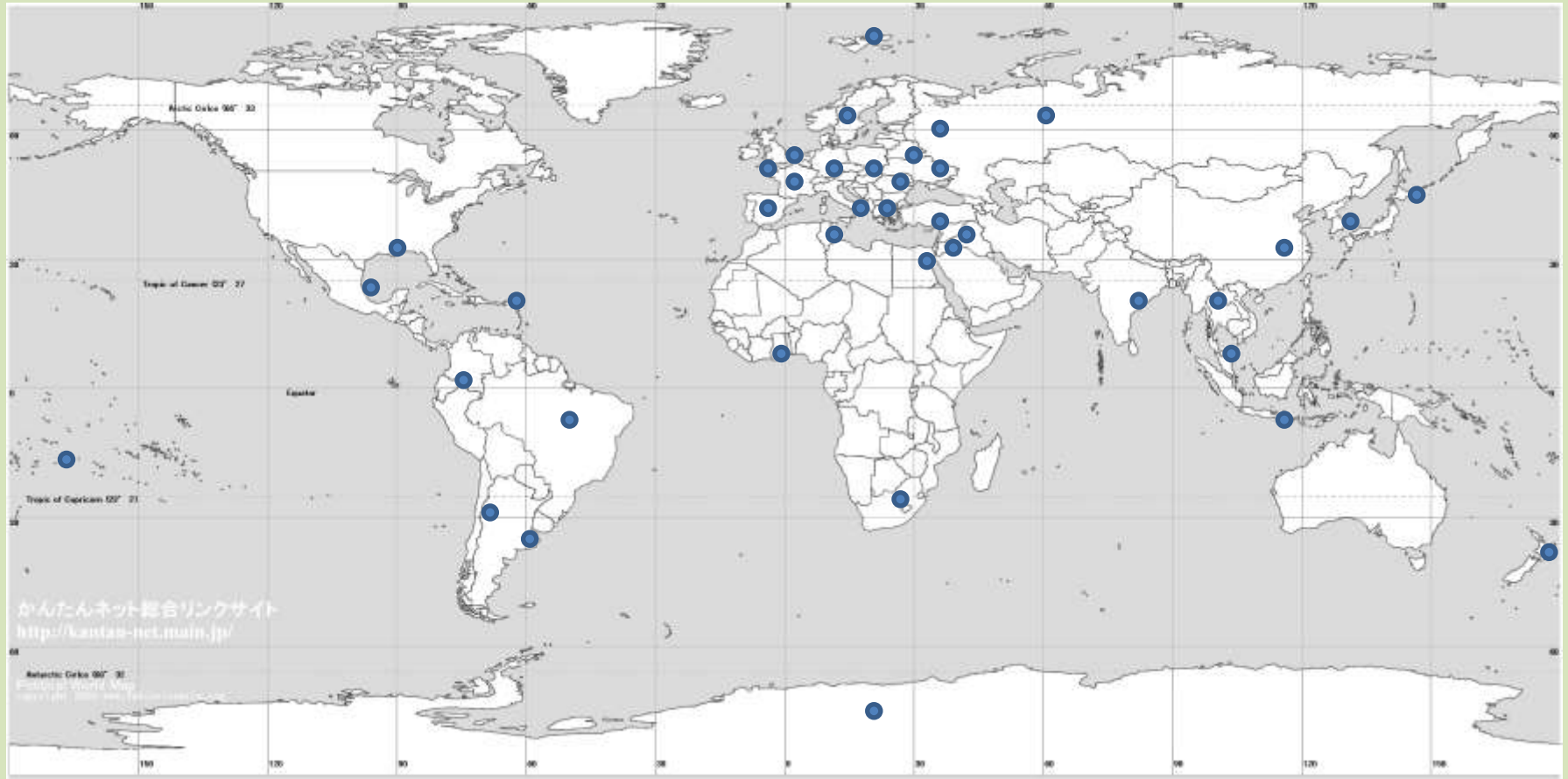








Science Unit - a global presence: studies of water pollution to date















E-waste



China





Pakistan



Thailand



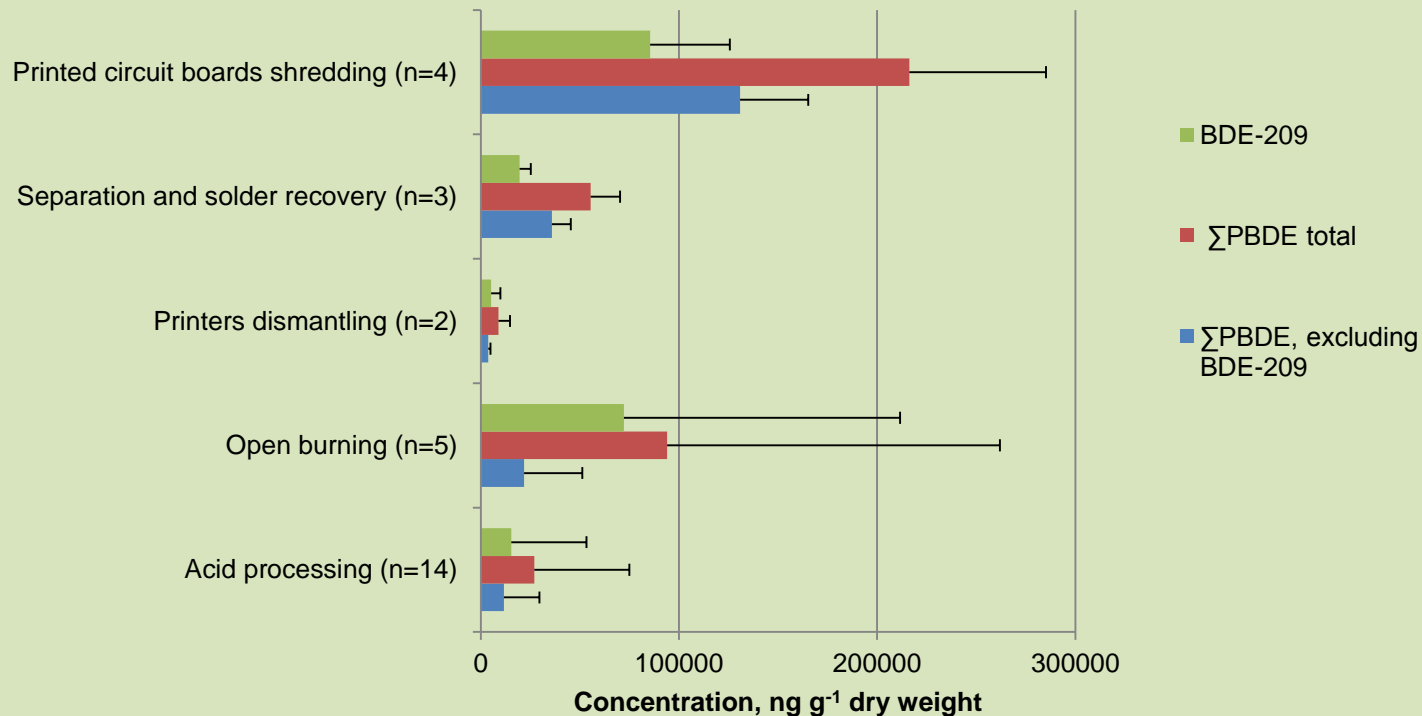
Ghana





Ongoing research

Levels and distribution of polybrominated diphenyl ethers in soil, sediment and dust samples collected from various **electronic waste recycling sites** within Guiyu town, southern China



Electronics



Production

Use

Recycling & Disposal



Guide to Greener electronics



- Reduction of greenhouse gas emissions
- Elimination of hazardous substances,
- Take-back and recycling of products responsibly
- Elimination of unsustainable materials in products & packaging

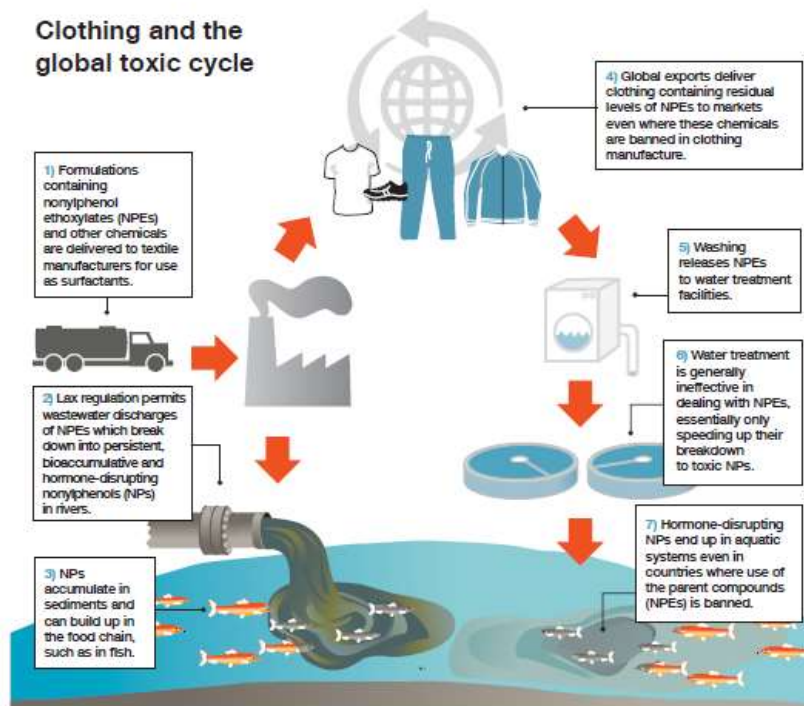
Textiles

Dirty Laundry

Unravelling the corporate connections to toxic water pollution in China

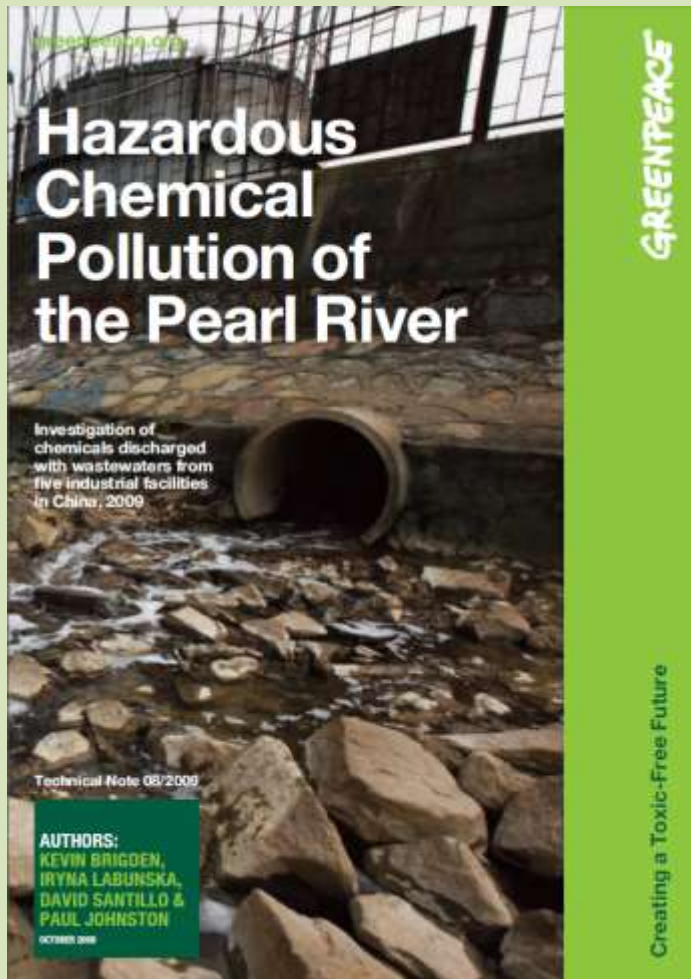


Clothing and the global toxic cycle



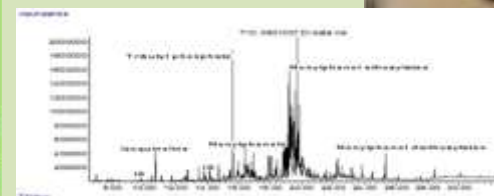
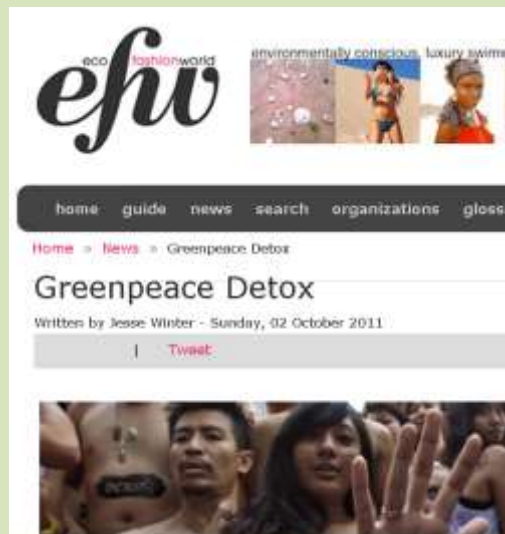
Preparatory work in China

2009

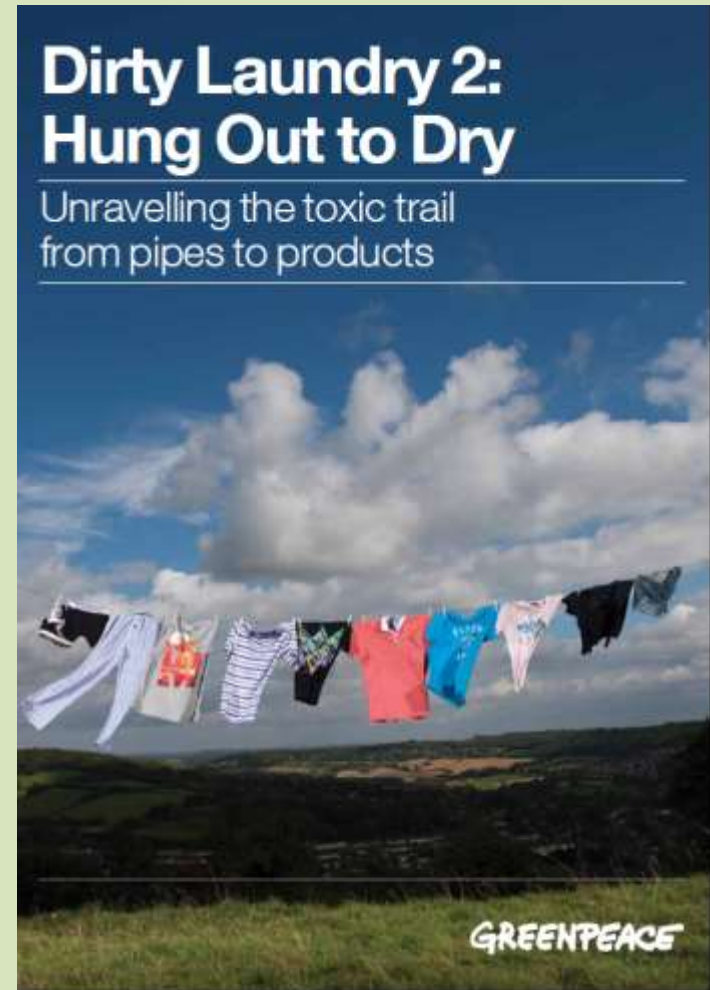


2010





Sustainable products: textiles

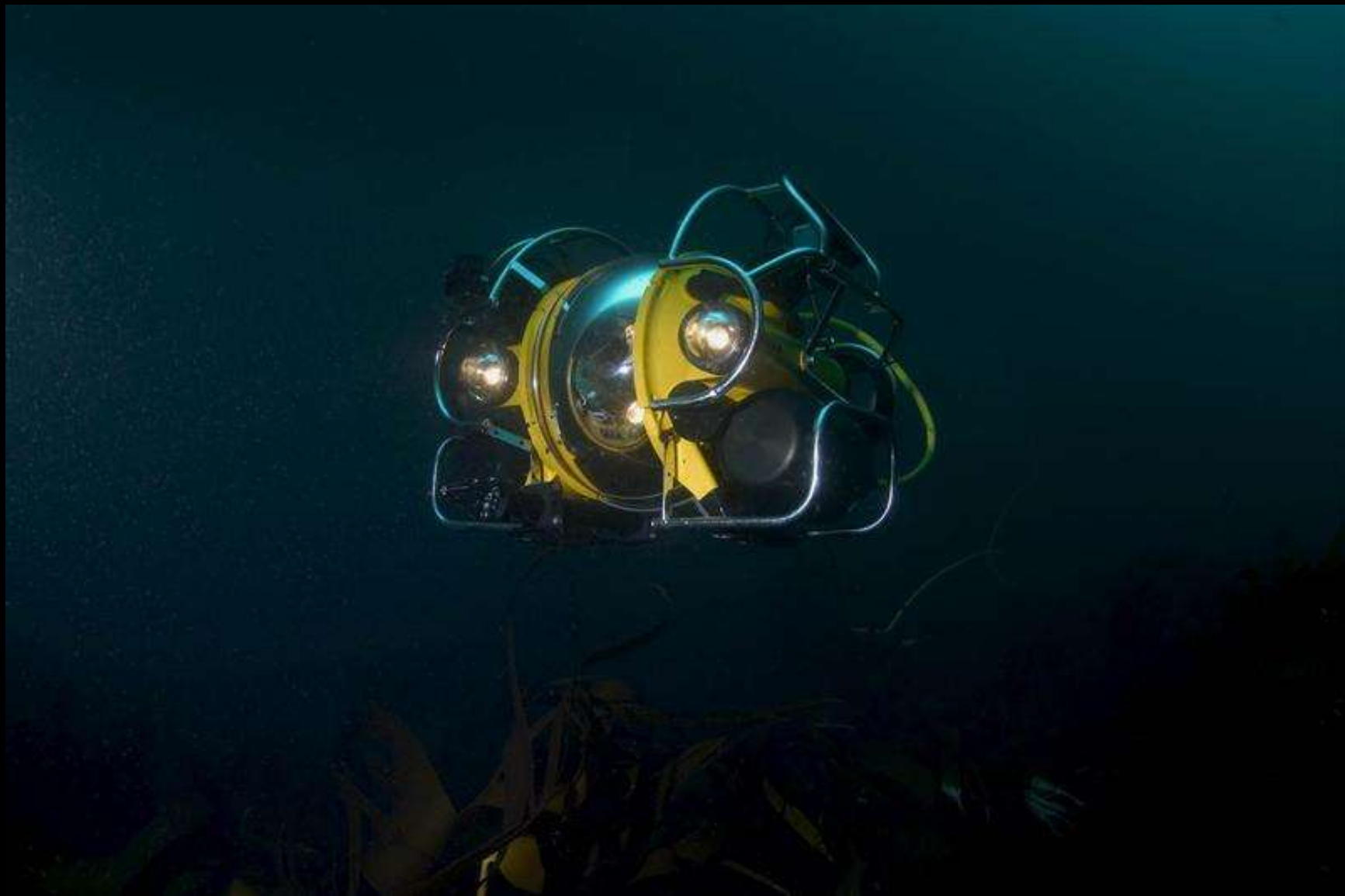














Science into policy: geoengineering



SOW
A con-
group
Pacific



Greenpeace

www.greenpeace.org

Greenpeace Research Laboratories

www.greenpeace.to/greenpeace